



GASKOV CLERGÉ FOUNDATION

NY 27TH ANNIVERSARY GALA

2025 ANNUAL REPORT

Building Health
Empowering Communities
Transforming Futures





QAE

PLAN WITH CONFIDENCE

The QAE Group stands out for their commitment to empowering clients through personalized financial planning, wealth management, and investment strategies, helping individuals and families reach their financial goals with confidence.

LETTER FROM LEADERSHIP

Dear Friends, Partners, and Supporters,

In 2025, we continued to translate commitment into measurable impact across the communities we serve.

Klinik Fonfred provided more than 11,143 medical consultations throughout the Grand Sud, with women representing 67% of patients and children nearly one third of those served, underscoring our critical role in supporting families and the next generation. Since our founding, we have delivered over 120,000 medical consultations, reflecting sustained and growing access to care.

Beyond access, we remain focused on continuity of care. Through consistent follow up, subsidized medication, and patient monitoring, individuals living with chronic conditions are receiving the ongoing care they need to lead healthier and more stable lives.

Our impact extends beyond healthcare. In 2025 alone, we supported more than 210 students across over 12 schools, and to date, we have provided nearly 3,000 scholarships, helping families keep children in school and strengthening long term opportunities.

We operate with a deep commitment to efficiency, accountability, and transparency, ensuring that every dollar entrusted to us delivers meaningful, measurable results.

As a diaspora-led and locally rooted organization, we believe this model is a powerful driver of sustainable development, grounded in trust, proximity, and long term engagement with the communities we serve.

Looking ahead, we are focused on expanding access to care and deepening our impact while continuing to invest in the systems and people that make lasting change possible. To our donors, partners, employees, and volunteers, thank you for being part of this journey. Your support makes this work possible, and together, we are building stronger, more resilient communities for generations to come.

With gratitude and determination,
Cosy Joseph - Chairperson & CEO



OUR MISSION

The Gaskov Clergé Foundation (GCF) exists to promote health, education, sports, and science in Haiti and the United States.

Through community-based healthcare, scholarships, and youth development programs, we empower individuals, strengthen families, and build resilient communities.

OUR VISION

We envision empowered communities where individuals have access to quality healthcare, education, and opportunities for growth, enabling them to lead healthier, more productive, and self-sustaining lives.



OUR HISTORY

Founded in 1999, the Gaskov Clergé Foundation was established to honor the life and legacy of Gaskov Clergé, a Haitian-born scientist, educator, and community advocate committed to advancing health, education, and youth development.

Originally from Les Cayes, Haiti, Gaskov pursued studies in Agronomy and Microbiology at Howard University and later conducted doctoral research in Food Microbiology for the U.S. Food and Drug Administration (FDA). His life was cut short at the age of 39, but his vision continues to guide the Foundation's work.

What began as a tribute has grown into a sustained, community-driven organization, impacting tens of thousands of lives across Haiti. Today, GCF remains deeply rooted in Les Cayes while supported by a global network, continuing to expand its reach and long-term impact.

HONORING THE GCF BOARD

The Gaskov Clergé Foundation's impact is guided by a dedicated Board of Directors whose leadership ensures the organization remains focused, accountable, and effective.

Board members bring a range of expertise and perspectives that strengthen decision-making and support the Foundation's work across healthcare, education, and community development. Their role extends beyond governance to active partnership through strategic guidance, fundraising support, and advocacy.

Their continued commitment has helped GCF remain resilient and responsive while expanding its reach and impact.

We extend our sincere gratitude to our Board members for their leadership, time, and dedication. Their partnership is essential to advancing our mission and sustaining our work.

EXECUTIVE BOARD OF DIRECTORS



Cosy Clergé-Joseph
Chairperson of the Board



Gervais Charles, M.D.
Vice-Chairperson



Pierre Richard Jason
Treasurer



Elizabeth Ledan
Secretary

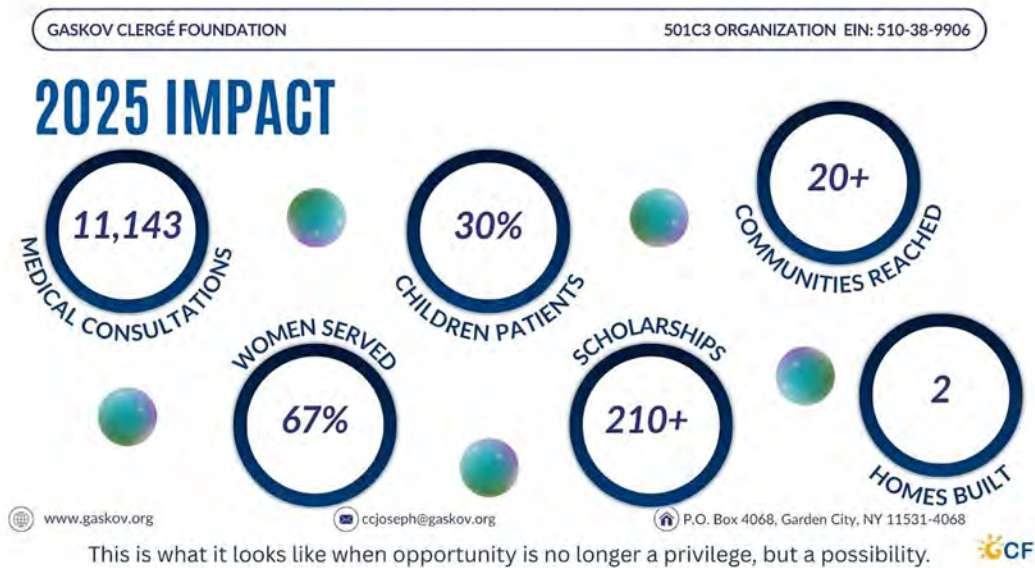
BOARD OF DIRECTORS

Anselm Joseph, Director of Operations
Claude G. Ferrer, Ph.D., Education Director
Eleonore Suze Millien, NP, Medical Supplies Director
Serge Thys, MD, Medical Director (South)
Roby Marsan, MD, Klinik Fonfred Pediatrician
Karl Joseph, Sports Director, Webmaster
Anne Marie Berthe Leveille-Tulce, Ph.D., Fundraising Co-Chair (NY)
Regine Bataille, MD, Fundraising Co-Chair (FL)
Dominique Deltor, MD, Public Relations (FL)
Yseult Belfort, Public Relations (NY)
Herzen Clergé, Public Relations

2025 IMPACT OVERVIEW

In 2025, our work reflected the resilience, commitment, and continued progress of the communities we serve. Klinik Fonfred conducted 11,143 medical consultations across more than 20 communities, with women representing 67 percent of patients and children accounting for approximately 30 percent, or more than 3,300 children served, underscoring our critical role in supporting families and the next generation.

We expanded access through two mobile clinics in Simon and Derrière Fort, in collaboration with ARCAM, and continued to strengthen community health initiatives as a designated partner of the Les Cayes Marathon.



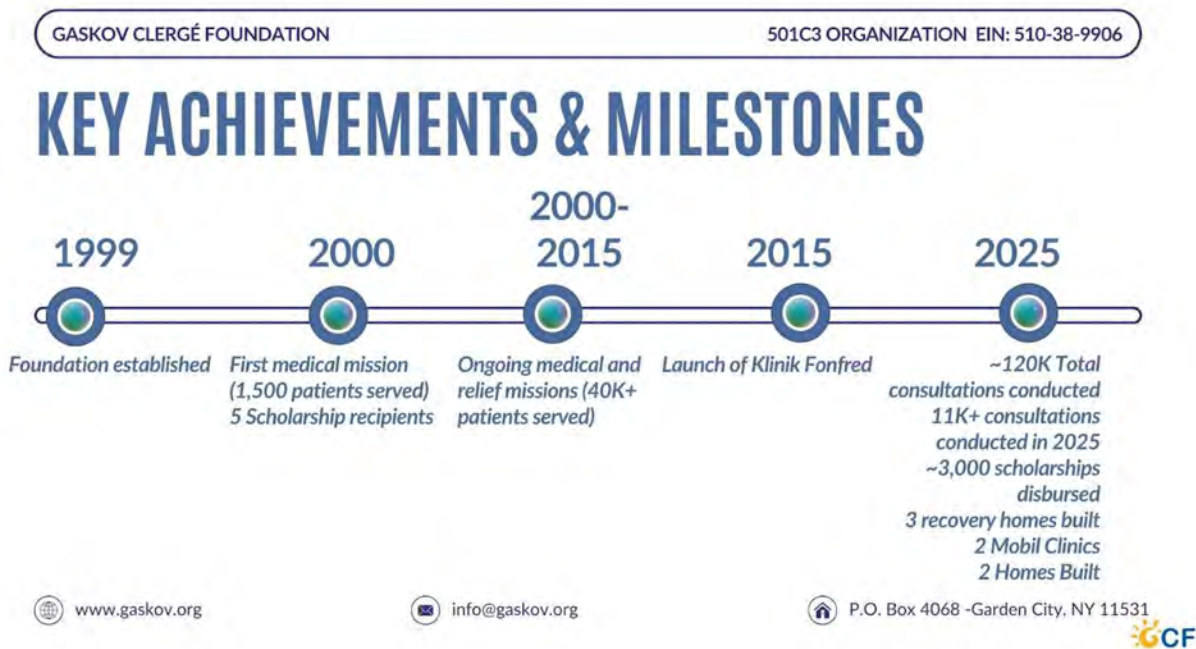
Beyond healthcare, we supported 210 students across 12 schools, reinforcing our commitment to education despite ongoing challenges. We also hosted essay contests in Haiti with Ecolojeune and in the United States with the Palm Beach County School District, empowering young voices across borders.

Our commitment to community development remained strong. We built two homes for families rebuilding after disaster, overcoming difficult road conditions, and rising construction costs. We also provided technical support to the Chamber of Commerce of Les Cayes for the Salon Technologique des Femmes, partnered with CLÉ Haitian Sisterhood to serve communities in South Florida while celebrating International Women’s Day, and supported the 75th Anniversary of the Haitian Women’s Congress in Limonade.

2025 IMPACT OVERVIEW *Cont...*

This year also marked a critical step forward in strengthening our operations with the purchase of a new vehicle for Klinik Fonfred, which will expand our ability to serve once released from customs.

OVERALL IMPACT (1999–2025)



Since our founding, the Gaskov Clergé Foundation has built a sustained, community-driven model of impact rooted in health, education, and resilience. From 2000 to 2015, GCF organized medical missions that provided 42,697 patient consultations, including a month-long daily mission in Port-au-Prince and Croix-des-Bouquets.

Recognizing the need for continuity of care, GCF established Klinik Fonfred, which has since become a permanent healthcare institution serving thousands of patients each year. Since 2015, Klinik Fonfred has conducted over 75,000 medical consultations.

Across all programs, GCF has delivered a total of 118,690 medical consultations, reflecting more than two decades of sustained service and impact.

OVERALL IMPACT (1999–2025)

Our investment in education has resulted in approximately 3,000 scholarships, helping to shape the next generation of leaders. We have also remained a consistent presence in times of crisis, leading disaster response and recovery efforts following the 2010 and 2021 earthquakes, Hurricane Matthew, and Hurricane Melissa.

Through our housing initiatives, we have built seven temporary shelters and three permanent homes, with two additional homes underway as part of ongoing recovery efforts supported by partners such as the Haiti Renewal Alliance.

As we celebrated the 10-year anniversary of Klinik Fonfred, we reflected on a decade of expanding access to care and strengthening community trust, as echoed through the testimonials of the patients we serve.

This work has been made possible through your unwavering support and enduring partnerships across Haiti, the United States, and Canada.

Together, these efforts reflect a long-term commitment to building healthier, more resilient, and more empowered communities.



HUMAN IMPACT FROM EMERGENCY TO STABILITY

For nearly a decade, two patients, Olienne Altenor and Francois Violette, have been receiving care at Klinik Fonfred. Both began their journey with the clinic in September 2016, facing serious and life threatening chronic conditions.

Olienne was battling both diabetes and hypertension, while Violette suffered from severe hypertension. At the time, their conditions were critical. Olienne's blood sugar levels were often so high that they could not even be measured by a glucometer and frequently exceeded 500 mg/dL. Violette's blood pressure, like Olienne's, regularly reached dangerous levels of 210/120, placing both women in constant medical emergency.

They were known at the clinic as emergency patients. Today, their story is one of transformation.

Through consistent care at Klinik Fonfred, both women have achieved stability. Olienne's blood sugar is now consistently within a healthy range of 70 to 120 mg/dL, and both patients maintain normal blood pressure levels around 130/80. What was once a life of constant crisis has become one of control, dignity, and renewed well being.



HUMAN IMPACT FROM EMERGENCY TO STABILITY



They are no longer rushed into emergency care. Instead, they arrive, sit, and wait for their appointments like any other patient, now serving as model examples of adherence and resilience.

Their progress is the result of more than medical treatment. Both women faithfully follow their prescribed diets, take their medications as directed, and attend their monthly appointments without fail. When asked about their experience, they speak with deep gratitude.

They describe the nurses as patient, attentive, and compassionate, taking the time to explain every detail and truly listen. They call them *manman lavi*, meaning mothers of life, a powerful reflection of the care and humanity they experience.

They also highlight the clinic's role in providing ongoing education, helping them better understand and manage their conditions. This knowledge, combined with consistent care, has transformed their daily lives.

For two women who once suffered greatly under the weight of chronic illness, Klinik Fonfred has not only improved their health, it has restored their quality of life.

In their words, the clinic is more than a healthcare facility, it is a source of life for the entire community.

KLINIK FONFRED TODAY: A MODEL OF COMMUNITY-BASED CARE



Happy 10th Year Anniversary!

In just a decade, Klinik Fonfred has transformed from a vision into a vital healthcare hub, delivering over 75,000 consultations and changing the trajectory of health for thousands of families.

From 3,771 patients in its first year to over 11,143 consultations in 2025, Klinik Fonfred has become a cornerstone of healthcare in Southern Haiti.

Klinik Fonfred stands today as a trusted healthcare hub serving communities across the Grand Sud of Haiti. With a dedicated team of 24 staff members under the leadership of Dr. Fatima Joseph, the clinic provides accessible, community-based care that meets patients where they are and supports them over time.

Services include primary care, pediatric services, chronic disease management, and medication distribution. This comprehensive approach allows the clinic to address both immediate health needs and long-term conditions within the same system of care.

KLINIK FONFRED TODAY: A MODEL OF COMMUNITY-BASED CARE

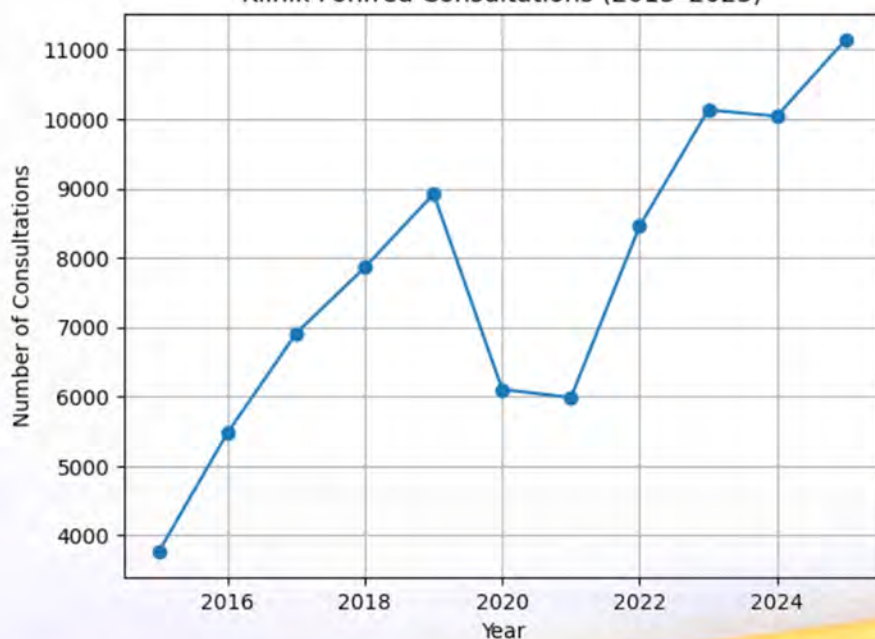
Women and children remain at the center of this work. In 2025, 67 percent of patients were women, reflecting the clinic’s critical role in supporting families and caregivers. Additionally, nearly one in three patients were children, underscoring the importance of pediatric and preventive care in the communities we serve.

A defining strength of Klinik Fonfred is its commitment to continuity of care, particularly for patients living with chronic conditions such as hypertension and diabetes. Patients benefit from regular follow-ups, access to subsidized medication, and ongoing monitoring—an approach that improves long-term health outcomes and reduces risk.

The impact of this model is best reflected in the lives of the patients themselves. Olienne Altenor and Francois Violette, once considered emergency patients due to dangerously high blood pressure and blood sugar levels, have achieved stability through consistent care at the clinic. Today, their conditions are well managed, and they live healthier, more dignified lives.

They credit the clinic’s compassionate nurses, whom they call manman lavi, for their patience, attentiveness, and dedication. Through treatment, education, and continuous support, they have regained control of their health. Their journey reflects the transformative power of accessible, consistent, and community-centered healthcare.

Klinik Fonfred Consultations (2015-2025)



EDUCATION & SCHOLARSHIP IMPACT

Education remains a cornerstone of the Gaskov Clergé Foundation’s mission to build long-term, sustainable impact. During the 2025–2026 academic year, GCF provided scholarships to over 210 students across 12 schools, helping families keep their children in school despite economic challenges.

Our scholarship program supports students across multiple institutions in the Les Cayes region, including primary and secondary schools, as well as specialized programs such as music education. These partnerships ensure that students receive not only financial support, but also access to structured learning environments that promote discipline, creativity, and academic growth.

We also extend our commitment internally by providing scholarships to the children of Klinik Fonfred staff, recognizing that investing in those who serve our communities strengthens the entire ecosystem of care and support.

Beyond financial assistance, our approach to education is rooted in dignity, opportunity, and continuity. By easing the burden of school fees, GCF enables students to remain focused on their studies and their future. Over time, this investment has resulted in approximately 3,000 scholarships awarded, contributing to the development of a generation equipped to lead, serve, and uplift their communities.



Through education, we are not only supporting individual students, we are strengthening families, reinforcing communities, and building the foundation for long-term transformation.

SCHOLARSHIP DISTRIBUTION BY SCHOOL (2025–2026)

<u>SCHOOL</u>	<u>NUMBER OF STUDENTS</u>
École de Musique Othello Bayard	15
École Congrégationiste La Sainte Famille	15
Sœurs Salésiennes de Don Bosco (NDPS)	25
Institution Nationale La Ruche	17
Institution Les Mains Ouvertes (Savane des Cayes)	18
Collège Frère Odile Joseph (FIC)	25
Institution Mixte Père Yves Jocelyn	8
Sœurs Externat St Joseph	19
École des Frères du Sacré-Cœur des Cayes	11
École La Providence des Cayes	13
École Nationale de Derrière-Fort	10
Institution des Sœurs de Sainte-Anne des Cayes (ENSA)	22
Total	210+

YOUTH, SPORTS, AND COMMUNITY DEVELOPMENT

The Gaskov Clergé Foundation continues to invest in youth and community development initiatives that promote leadership, cultural identity, and civic engagement across Haiti and the diaspora.

A cornerstone of this effort is the Palm Beach Haitian Heritage Month Essay Contest, established in 2004 in partnership with The School District of Palm Beach County. The contest encourages students to explore Haiti's history, culture, and global contributions while strengthening their confidence and voice. In 2023, six students were recognized for their outstanding essays, led by first-place winner Joel Vincent (Suncoast High School), followed by Markens Metellus (Atlantic High School) and Djepheron Jean-Baptiste (Santaluces High School). Winners received scholarships and were honored publicly, reinforcing pride in Haitian heritage and academic excellence.

LOREYA KONKOU DISÈTASYON MWA ERITAJ AYISYEN

ME 2025

			
	Mike Fleurme Premye Loreya	Gerdelin Dumas Dezyèm Loreya	Christ Etienne Twazyèm Loreya

YOUTH, SPORTS, AND COMMUNITY DEVELOPMENT

In Haiti, GCF also supports youth through the Ecolo-Jeunes Essay Contest, which celebrates critical thinking, creativity, and intellectual rigor. The 5th edition, held on August 30, 2025, at the Collège Frère Odile Joseph in Les Cayes, brought together students from NS1 to NS4 across multiple schools in the South. The competition challenged participants to reflect on the theme: “How can technological progress pose a threat to human rights?”

Mitchaina Rémy, a student at Collège Frère Odile Joseph, won first place, followed by Barany Berjuste of Renaissance Academy in second place and Josée Sandellana Joseph, also of Renaissance Academy, in third. The winners received medals, laptops, tablets, smartphones, books, and gift certificates, recognizing both their excellence and the power of their ideas.



The winners with Ecolo-Jeune President, Debora Esperance

COMMUNITY DEVELOPMENT

Beyond education, GCF contributes to women's empowerment and innovation through its support of the Salon Régional de la Technologie et de l'Entrepreneuriat Féminin, organized in partnership with the Chamber of Commerce of Women Entrepreneurs and Professionals of the South and CLÉ Haitian Sisterhood. This initiative creates a platform for women to engage with technology, entrepreneurship, and leadership development. GCF also plays an active role in community health and sports. Through Klinik Fonfred, the foundation provided medical support for athletes during the Les Cayes Marathon, ensuring safe participation in one of the region's most significant sporting events, held shortly after major flooding impacted the area.



SALON RÉGIONAL DE LA TECHNOLOGIE ET DE L'ENTREPRENEURIAT FÉMININ

Together, these initiatives reflect GCF's commitment to developing well-rounded communities by investing in youth, supporting women, and fostering environments where culture, leadership, and opportunity can thrive.

SUPPORTING HEALTH AND COMMUNITY THROUGH SPORTS

Klinik Fonfred proudly serves as a medical partner of the Les Cayes Marathon, providing essential medical care to athletes throughout the event. For the past seven years, our team has worked closely with marathon organizers to ensure the safety and well-being of all participants.

From pre-race readiness to on-site medical support, Klinik Fonfred plays a critical role in responding to injuries, managing health incidents, and promoting safe participation. This partnership reflects our broader commitment to community health beyond the walls of the clinic.



The marathon has become a powerful symbol of resilience and unity in the region, bringing together athletes, families, and supporters. Through our continued involvement, Klinik Fonfred helps ensure that this important community event remains safe, accessible, and impactful for all.

DISASTER RECOVERY AND HOUSING

In the aftermath of the 2021 earthquake, the Gaskov Clergé Foundation made a long-term commitment to stand with families in the South of Haiti as they rebuild their lives. What began as emergency response has evolved into a sustained recovery effort focused on restoring dignity, stability, and security through safe housing.

Since launching this initiative, GCF has made steady and meaningful progress. In 2024, one permanent home was completed, followed by the construction of two additional homes in 2025, providing families with safe and stable living conditions after years of uncertainty. Despite rising construction costs, difficult road conditions, and ongoing political instability, this work has continued with determination and purpose.



DISASTER RECOVERY AND HOUSING *Cont...*

Recovery is ongoing. We have started construction of home #4 in Flamand and planning on #5, continuing a phased approach to rebuilding. Beyond construction, the Foundation remains engaged with families, supporting their transition from survival to stability.

The impact of this work is best expressed by those who experience it. In the words of one beneficiary, Mr. Jocelyn:

“This house is such a huge blessing for me. It allows me to live at ease. The only place that could have been better for me is heaven. May God abundantly bless all those who contributed to making this home a reality for my family.”

Each home represents more than a shelter. It is peace of mind, renewed dignity, and a foundation for the future. Through this initiative, GCF continues to prove that recovery is not a moment, but a long-term commitment to rebuilding lives and communities.



FINANCIAL INTEGRITY & IMPACT

At the Gaskov Clergé Foundation, financial integrity is about aligning resources with our mission, protecting the trust placed in us, and ensuring that every contribution produces meaningful community impact.

In 2025, we generated \$257,153 in total public support and revenue. Of that amount, \$92,063 came from direct donations, while \$165,019 was raised through special events and fundraising activities. This means that approximately 64 percent of our 2025 revenue was generated through community engagement efforts, while 36 percent came from direct donations. This diversified support base reflects both strong community participation and our ability to mobilize resources beyond traditional funding channels.

Our total expenses for 2025 were \$272,998, resulting in a modest year-end deficit of \$15,846. This shortfall reflects a deliberate and strategic investment decision rather than a structural imbalance. In 2025, we invested in the purchase of a vehicle to support staff transportation. Prior to this investment, we were spending over \$6,500 annually on transportation. The vehicle purchase represents a cost-optimization strategy that will reduce recurring expenses over time while improving operational efficiency and reliability for Klinik Fonfred and our program staff.

GASKOV CLERGÉ FOUNDATION 501C3 ORGANIZATION EIN: 510-38-9906

FINANCIAL SUMMARY

OUR COMMITMENT: TRANSPARENCY. ACCOUNTABILITY. MAXIMUM IMPACT.

<p>TOTAL FUNDS RAISED</p> <p>\$257,082</p> <p>TOTAL EXPENSES</p> <p>\$272,998</p> <p><small>** Year-end deficit of \$15,846 spent on strategic investments which include the purchase of a new car for the clinic.</small></p>	<p>WHERE YOUR SUPPORT WENT</p> <ul style="list-style-type: none">• 66% Programs & Services• 28% Fundraising & Development• 6% Operations
--	---

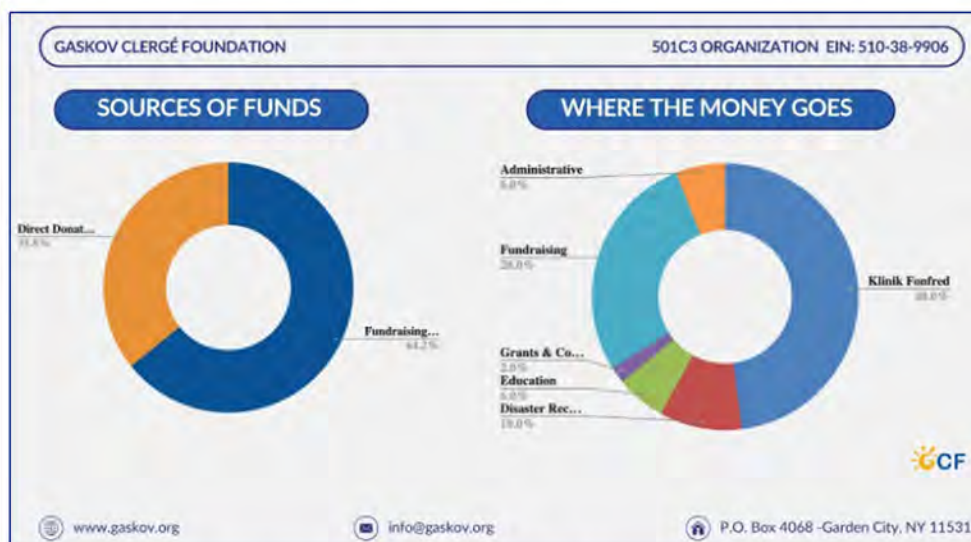


www.gaskov.org info@gaskov.org P.O. Box 4068 -Garden City, NY 11531

FINANCIAL INTEGRITY & IMPACT

We remained strongly mission-focused in how funds were deployed. Of total expenses, approximately 66 percent supported direct program services, including healthcare, education, grants, and construction. Klinik Fonfred alone represented nearly 48 percent of all expenses, underscoring our deep commitment to healthcare access. Education accounted for nearly 6 percent of total spending, while construction and recovery investments represented close to 10 percent, reflecting our continued support for families rebuilding after disaster.

We maintained a disciplined approach to operations. Administrative expenses remained lean at approximately 6 percent of total expenses, while fundraising expenses represented about 28 percent of total spending, reflecting the cost of generating community-based revenue through major events and engagement efforts that sustain our broader mission.



Over time, this commitment to financial integrity has translated into real scale. According to our historical records, we have managed more than \$3.15 million in cumulative revenue since 1999. During that same period, we have supported nearly 2,905 scholarship recipients and helped finance more than 128,000 medical consultations across our medical missions and Klinik Fonfred.

These numbers reflect more than financial performance—they represent lives impacted. We are not only delivering results; we are doing so with discipline, transparency, and a clear commitment to ensuring that every dollar entrusted to us advances our mission and contributes to long-term community transformation.

DONOR AND PARTNER APPRECIATION

A Community That Makes the Mission Possible

Our work is made possible by a powerful and growing community of individuals, partners, and organizations who believe in our mission and invest in the future of the communities we serve.

We are deeply grateful for every contribution, whether given once, monthly, or through sustained partnership. Each act of generosity reflects a shared commitment to expanding access to healthcare, education, and opportunity in Haiti.

Our individual donors remain the foundation of our work, showing up consistently and strengthening our ability to deliver impact. We are equally grateful to our monthly donors, whose recurring support provides the stability needed to plan, grow, and respond to community needs. Expanding this group of sustaining donors is a key priority as we continue to build a more resilient and reliable foundation for our programs.



Our partners, sponsors, and volunteers play an equally vital role. Through collaboration, resources, and dedicated service, they help extend our reach and deepen our impact across every initiative.

Together, this community represents more than support. It represents shared ownership of a mission rooted in dignity, opportunity, and transformation. We honor that trust by remaining committed to delivering impact with integrity, transparency, and purpose.



TABOU COMBAT SUPER STARS



**TABOU COMBO
SUPERSTARS**
GLOBAL AMBASSADORS OF
HAITIAN MUSIC & CULTURE
PRESENTED IN RECOGNITION OF YOUR
EXTRAORDINARY CONTRIBUTION
TO MUSIC AND CULTURE,
FOR SHARING THE SOUND AND SOUL OF HAITI
WITH GENERATIONS ACROSS THE GLOBE.
YOUR LEGACY LIVES ON
FROM GENERATION TO GENERATION.

GCF
GASKOV CLERGÉ FOUNDATION
MARCH 21, 2026

Congratulations Tabou Combo Superstars!

GCF seizes this special moment to Honor you
as our Global Ambassadors of Haitian Music & Culture
in recognition of your extraordinary contribution to music and culture.
For sharing the sound and soul of Haiti with generations across the globe.
Your legacy lives on from generation to generation.

A HEARTFELT THANK YOU TO OUR VOLUNTEERS

At the heart of the Gaskov Clergé Foundation is a powerful truth:

NONE OF THIS WORK IS POSSIBLE WITHOUT OUR VOLUNTEERS.

Your time, your energy, your commitment, and your belief in this mission are what bring everything to life. You show up, you lead, you support, and you carry this work forward with love and purpose.

Because of you, we are able to serve communities, care for patients, and empower families in Haiti and beyond.

We are deeply grateful for each and every one of you.

FLORIDA VOLUNTEERS

Alec Millien

Alex Leonor

Andy Berjuste

Angelita Nicolas

Anselme Joseph

Antoinette Desrosiers

Carline Deltor

Carline Porsena

Danielle Despierre

Delano Elysee

Denise Elysee

Esther Merillien

Eveline Saintvil

Fabienne Berat

Faizah Akamune

Karl Joseph

Kayla Edouard

Louna Avril

Malou Lange

Myriam Zamor

Naike Thomas

Patrick Pluviose

Philippe Saint Louis

Rachelle Daoud Lexima

Regine Bataille

Rene Kenol

Rosalain Crevecoeur

Salome Modelus

Sandra Vachon

Shanel Deltor

Sophia Mercier

Suze Millien

Tiem Okori

YOU ARE THE BACKBONE OF THE FOUNDATION

Thank you for showing up!

Thank you for believing!

Thank you for standing with us!

A HEARTFELT THANK YOU TO OUR VOLUNTEERS

At the heart of the Gaskov Clergé Foundation is a powerful truth:

NONE OF THIS WORK IS POSSIBLE WITHOUT OUR VOLUNTEERS.

Your time, your energy, your commitment, and your belief in this mission are what bring everything to life. You show up, you lead, you support, and you carry this work forward with love and purpose.

Because of you, we are able to serve communities, care for patients, and empower families in Haiti and beyond.

We are deeply grateful for each and every one of you.

NEW-YORK VOLUNTEERS

Ange-Marie Joseph
Angie Daniel Davis
Anne Marie Berthe Leveille-Tulce
Annie Fils-Aime Joseph
Christian Clerge
Elisabeth Ledan
Herzen Clerge
Joelle Montplaisir
Myrlene Clerge

Rose Delva
Sagina Tulce
Stacey Lubin
Talisah Clerge
Tracey Lubin
Winnie Jerome
Yseult Belfort

YOU ARE THE BACKBONE OF THE FOUNDATION

Thank you for showing up!

Thank you for believing!

Thank you for standing with us!

LOOKING AHEAD

As we look to the future, we remain grounded in our mission and energized by the progress we have made together. The needs of the communities we serve continue to evolve, and so must our commitment to meeting them with intention, innovation, and care.

We are focused on expanding access to healthcare by strengthening and scaling the services of Klinik Fonfred, ensuring that more individuals and families receive consistent, quality care. At the same time, we are committed to growing our education programs, creating pathways for more students to access opportunities that can transform their lives and communities.

We will continue to invest in strengthening community resilience, supporting families as they rebuild, adapt, and move forward in the face of ongoing challenges. This includes both immediate support and long-term solutions that promote stability, dignity, and self-sufficiency.

Looking ahead, we are also committed to building a stronger and more sustainable foundation for our work by deepening partnerships, expanding our base of recurring supporters, and continuing to operate with discipline and integrity.

OUR GOAL REMAINS CLEAR

Health and education are basic human rights, not a privilege. We are committed to contributing to a future where they are a reality for all.

CLOSING REFLECTIONS FROM GCF'S CHAIRPERSON & CEO

“We may not solve every challenge, but we can choose to show up, to build, and to create pathways where none existed before. That is how change begins and how opportunity becomes possible.”

Cosy Joseph



**Come and feel the difference and
achieve optimal dental wellness.**



**Family Dental Care of Elmont
476 Elmont Road - Elmont, NY 11003**

**Business Hours: Sunday: Closed
Mon, Fri: 8:30 am - 5:00 pm
Tue - Wed: 8:30 am - 8:00 pm
Thu, Sat: 8:30 am - 3:00 pm**

Call us: (516) 354-5805

